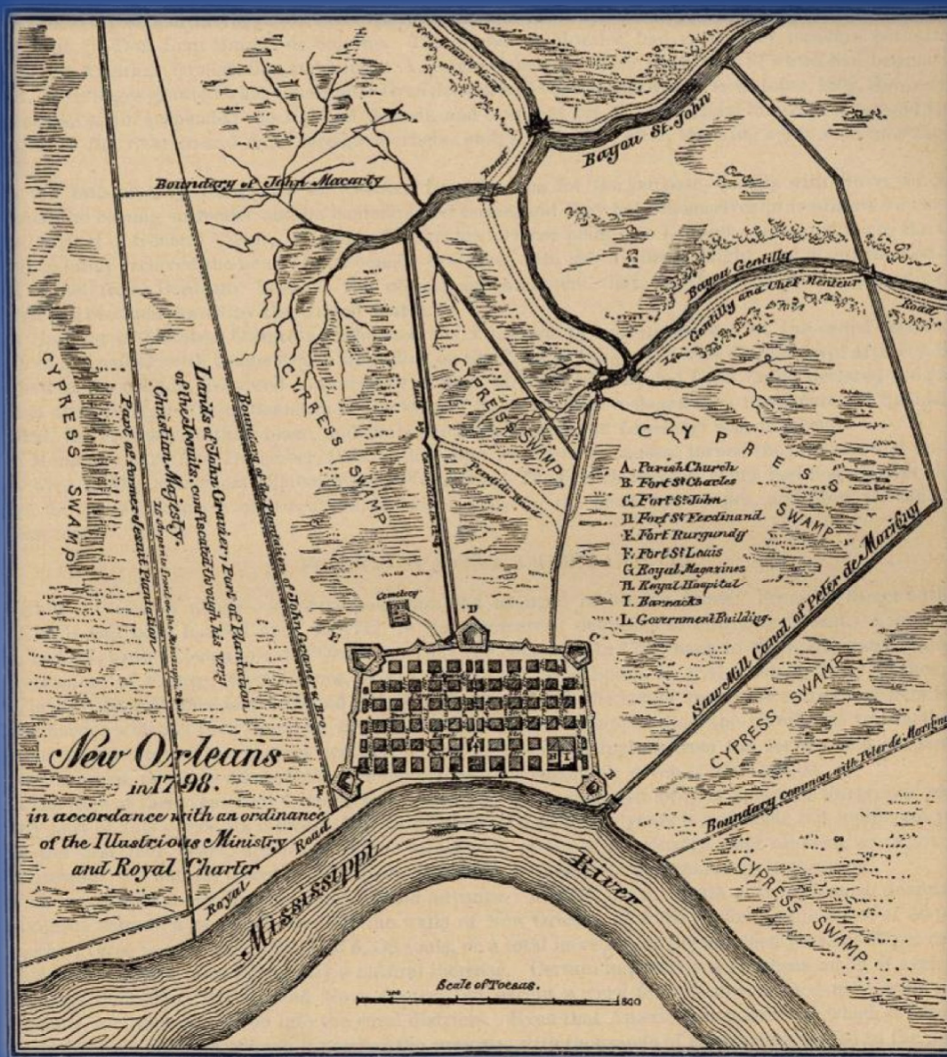




# How Smart Can this Be?

**John S. Jacob, Ph.D.**  
Texas Coastal Watershed Program  
Texas A&M University System





# Bienville's Dilemma



**Does Smart Growth = Resilient Growth?**

# Greater social cohesion



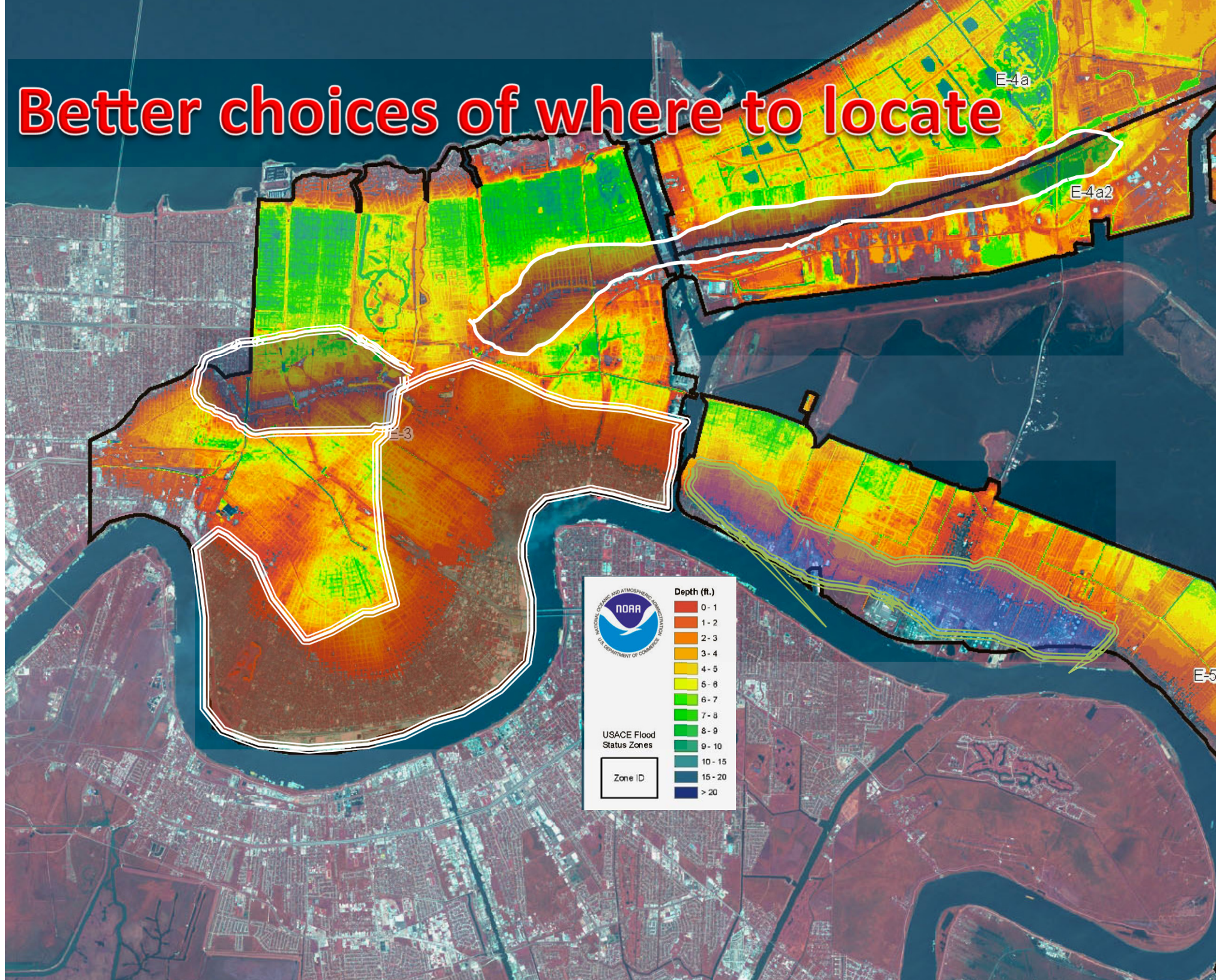
# Less area to protect



Image © 2009 DigitalGlobe  
Image Houston-Galveston Area Council  
Image NASA

©2008 Google™

# Better choices of where to locate



# Sturdier structures



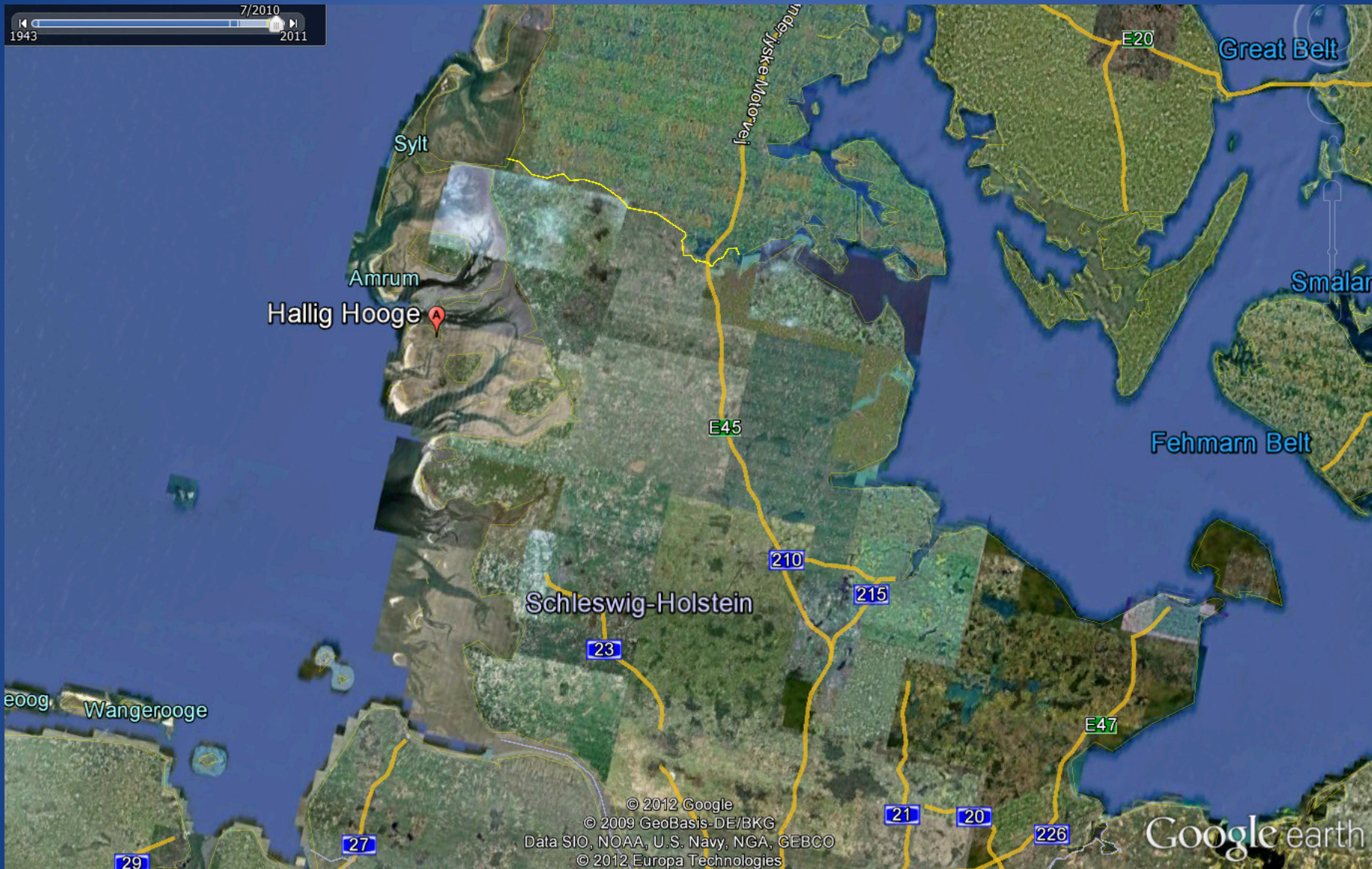
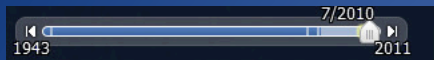
© 2005 Microsoft Corporation © 2005 Pictometry International Corp.



# Proximity to refuge

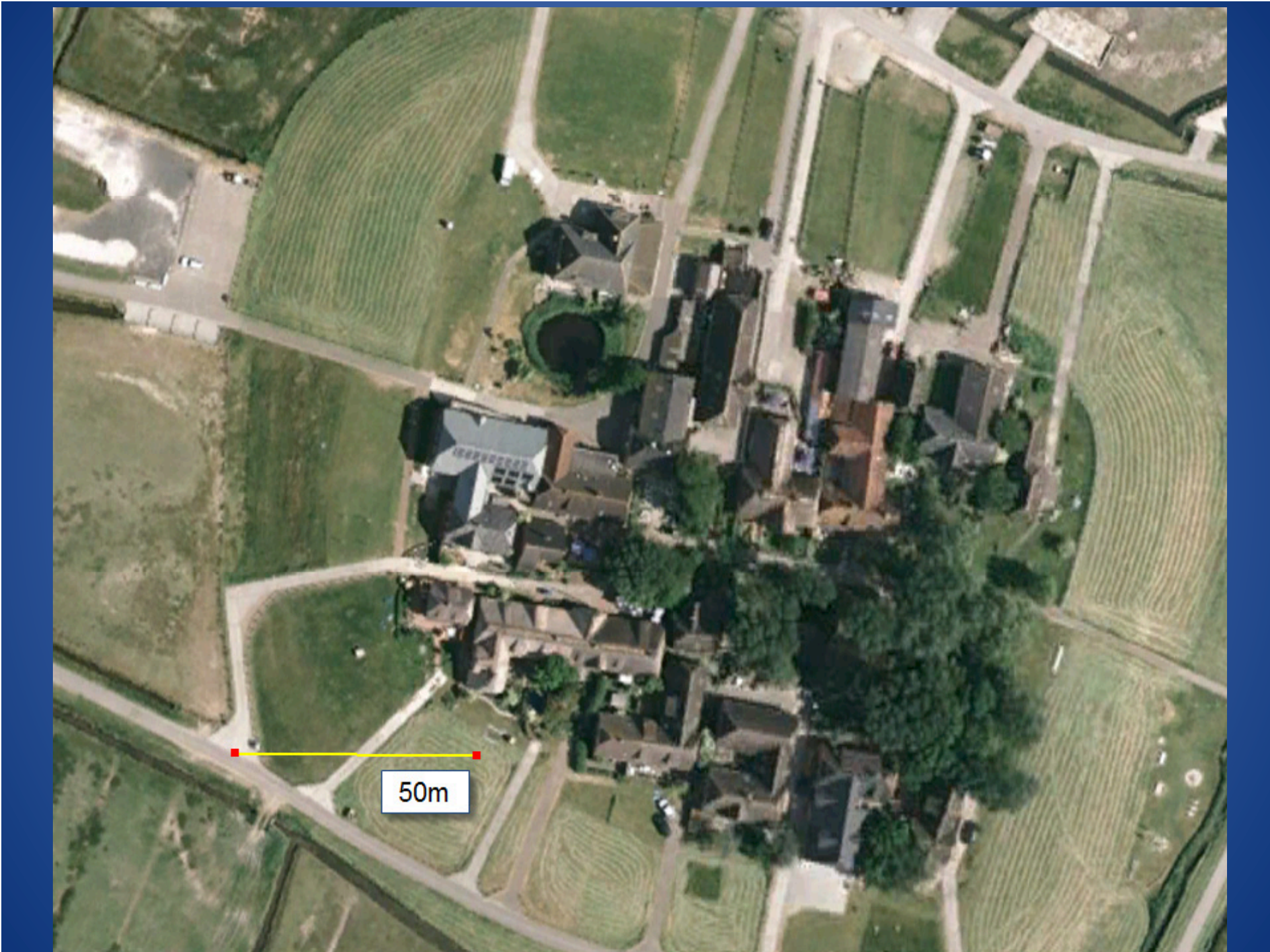


Community safe room?

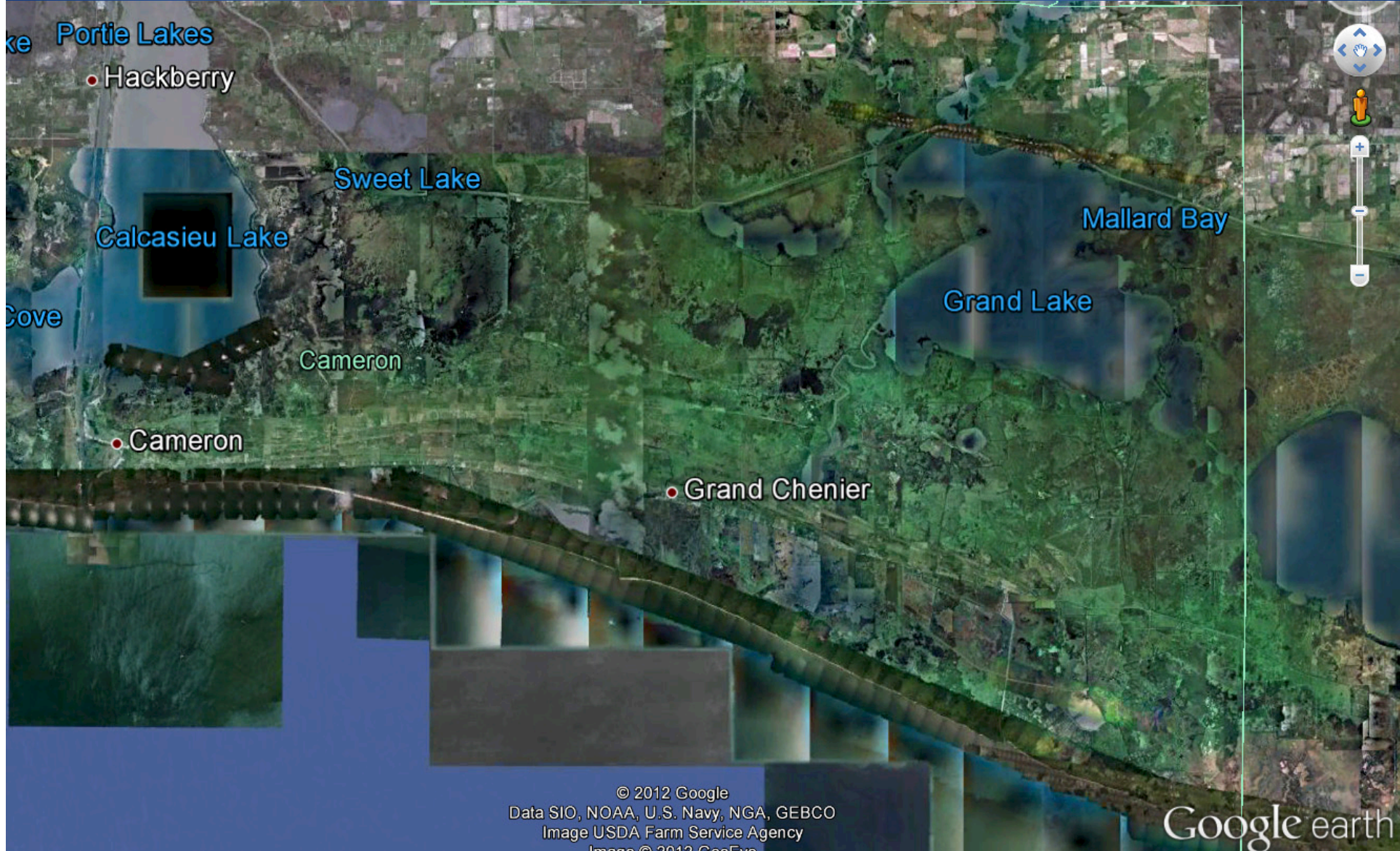


© 2012 Google  
© 2009 GeoBasis-DE/BKG  
Data SIO, NOAA, U.S. Navy, NGA, GEBCO  
© 2012 Europa Technologies









© 2012 Google  
Data SIO, NOAA, U.S. Navy, NGA, GEBCO  
Image USDA Farm Service Agency  
Image © 2012 GeoEye

Google earth



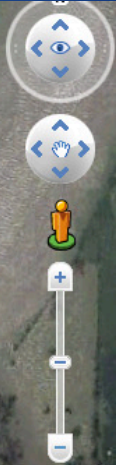
50 m

© 2012 Google

Image USDA Farm Service Agency  
© 2012 Europa Technologies

Google earth

9/24/2005



© 2012 Google  
Image USDA Farm Service Agency  
Image NOAA  
© 2012 Europa Technologies

Google earth





**WHAT**



**WHERE**



**HOW**

# Coastal Community Resilience

# Developed

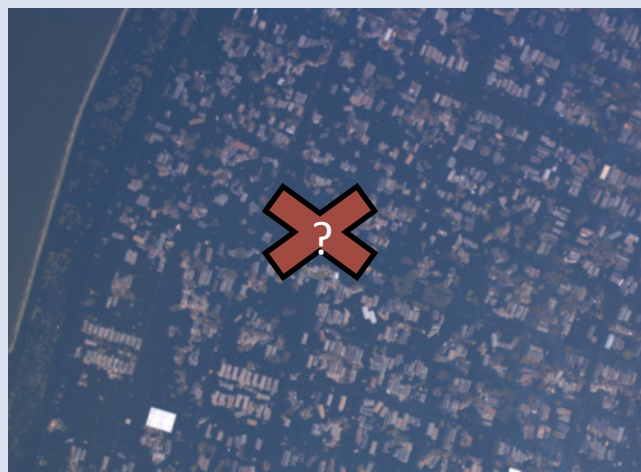
YES

NO

HIGH



LOW



Location Resilience



oneū  
HOUSE

Don  
Rouse's  
Est.  
1982

YAGAS

OLD GALV

Resilience

Placemaking